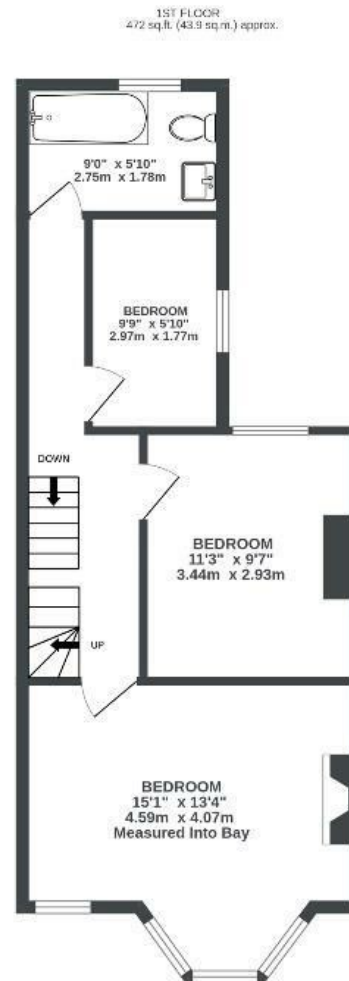
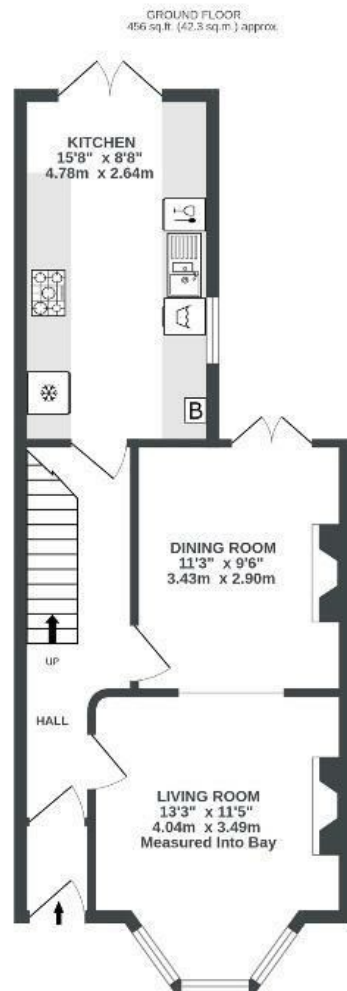


Belmont Road

BRISLINGTON

APPROXIMATE FLOOR AREA
109 SQM / 1173 SQFT



Illustrations are for reference purposes only, measurements are approximate, not to scale.

Boardwalk

Belmont Road

BRISLINGTON, BRISTOL



£450,000



4 Bedrooms



BS4 3PB



2 Bathrooms

"We bought our family home five years ago as a project and have enjoyed fully renovating it over the years such as re-wiring, new bathroom, kitchen and our favourite room the loft extension. We have also transformed the garden which looks its best in the spring when the daffodils and then tulips emerge. Since living here we have found it to be a great area for families with an ever improving Sandy Park Road. We have loved great food trucks at Paintworks, a local brewery. It is really well connected with the number 1 bus running from the bottom of the road perfect for the centre of town and Temple Meads."

